

HS-420I/M Intrinsically Safe Accelerometer

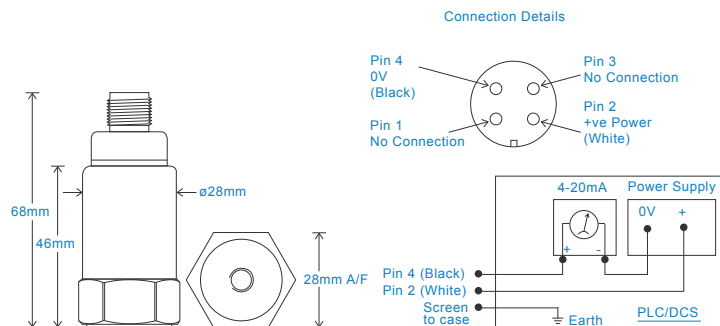
4-20mA velocity output via M12 Connector

Key Features

- Intrinsically Safe with European, USA, Australian, South African, and Indian approvals
- Approved SIL 2 and SIL 3
- For use with PLC/DCS systems
- Customisable features

Industries

Building services, Pulp and Paper,
Mining, Metals, Utilities, Automotive,
Water, Pharmaceutical



Technical Performance

Mounted Base Resonance	5kHz min
Velocity Ranges	see: 'How To Order' table $\pm 10\%$ Nominal 80Hz at 22°C
Frequency Response	10Hz (600cpm) to 1kHz (60kcpm) $\pm 5\%$ - ISO10816
Isolation	Base isolated
Range	50g peak
Transverse Sensitivity	Less than 5%

Mechanical

Case Material	Stainless Steel
Sensing Element/Construction	PZT/Compression
Mounting Torque	8Nm
Weight	150gms (nominal)
Screened Cable Assembly	HS-AC010 - straight HS-AC011 - right angle
Mounting Threads	see: 'How To Order' table

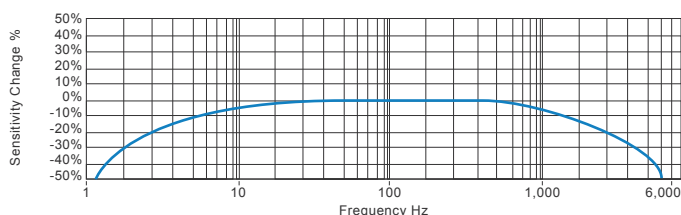
Electrical

Current Output	4-20mA DC proportional to Velocity Range
Supply Voltage	15-30 Volts DC (for 4-20mA)
Settling Time	2 seconds
Output Impedance	Loop Resistance 600 Ohms max. at 24 Volts
Case Isolation	$>10^8$ Ohms at 500 Volts

Environmental

Operating Temperature Range	see: attached certification details
Sealing	IP67
Maximum Shock	5000g
EMC	EN61326-1:2013

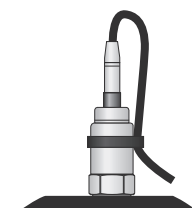
Typical Frequency Response



Applications

Fans, Motors, Pumps, Compressors,
Centrifuges, Conveyors, Air Handlers,
Gearboxes, Rolls, Dryers, Presses,
Cooling, VAC, Spindles, Machine Tooling,
Process Equipment

Vibration sensor should be firmly fixed to a flat surface
(spot face surface may be needed to be produced and
cable anchored to sensor body.)



Certifications



This product is certified in accordance with
UL 913, 8th Ed. Rev. December 6, 2013
CAN/CSA C22.2 No. 157-92 (R2012) +Upd1 +Upd2



T: 150 210 98804
www.hansfordsensors.com.cn
汉施弗德传感器（上海）有限公司

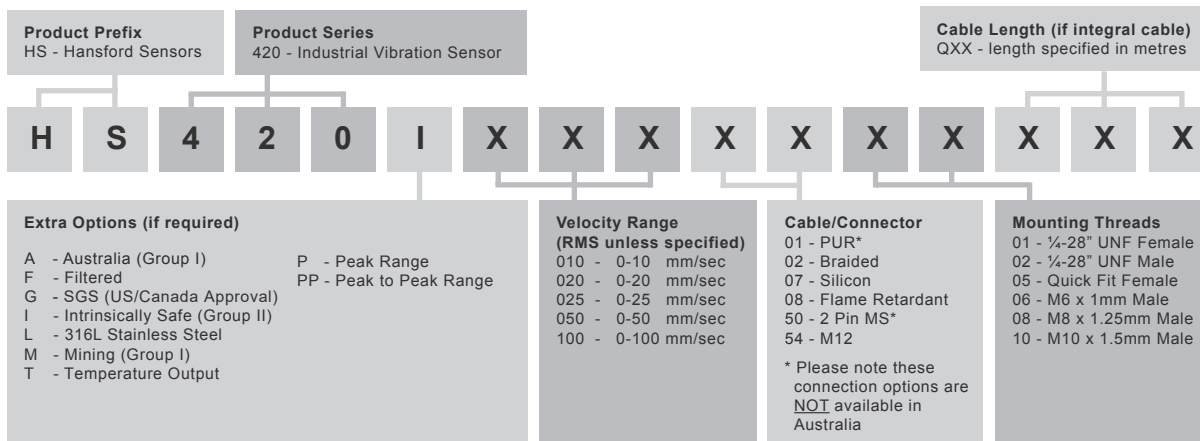


4-20mA velocity output via M12 Connector

Intrinsically Safe Requirements

Maximum Cable Length	See website: www.hansfordsensors.com see attached system drawings	US/Canada Approvals	Certificate No. SGSNA/18/SUW/0000231
		Class I, II, III, Division 1, 2, Groups A - G, T4, -40°C to +110°C, Class I, Zone 0, AEx, ia, IIC, T4, Ga, -40°C to +110°C	
Certificate details: Group I + II	IECEX BAS08.0034X Baseefa08ATEX0086X	Zone 20, AEx, ia, IIC, T130°C, IP65, Da, -40°C to +110°C	
	ⓂII 1GD Ex ia IIC T6 Ga Ex ia IIIC T80°C IP65 Da	Barrier	1 x Pepperl + Fuchs Galvanic Isolator KFD2-STC4-Ex1, which has superseded KFD2-CR-Ex1.30300 (BAS00ATEX7164)
	Ⓜ I M1 Ex ia I Ma (-40°C ≤ Ta ≤ +60°C)		see attached system drawings
Certificate details: Group II	ⓂII 1GD Ex ia IIC T4 Ga Ex ia IIIC T130°C IP65 Da (-40°C ≤ Ta ≤ +110°C)	1 x MTL Zener Barrier MTL7787+ (BAS01ATEX7217) or Pepperl + Fuchs Zener Barrier Z787 (BAS01ATEX7005) or any other barrier that conforms to system drawings attached	
		System Connections for Zener Barrier	see attached system drawings
Accelerometer System Certificate	Baseefa08Y0087 Ex ia IIC T6 (-40°C ≤ Ta ≤ +60°C) *On request - consult Sales Office	System Connections for Galvanic Isolator	see attached system drawings
Terminal Parameters	Ui = 28V, li = 115mA, Pi = 0.65W Group II Ui = 16.5V Pi = 0.65W or Ui = 28V li = 115mA Pi = 0.65W Group I	Terminal Parameters	Ui = Vmax = 28V li = Imax = 115mA Pi = 0.65W
500V Isolation	Units Will Pass A 500V Isolation Test	Notes:	Special conditions of safe use for Group II dust. The free end of the cable on the integral cable version of the apparatus must be terminated in an appropriately certified dust-proof enclosure. The unit has no serviceable parts.
Certified Temperature Range	Ex ia IIC T6 Ga (-40°C ≤ Ta ≤ +60°C) (Gas) Ex ia IIC T4 Ga (-40°C ≤ Ta ≤ +110°C) (Gas) Ex ia IIIC T80°C IP65 Da (-40°C ≤ Ta ≤ +60°C) (Dust) Ex ia IIIC T130°C IP65 Da (-40°C ≤ Ta ≤ +110°C) (Dust) Ex ia I Ma (-40°C ≤ Ta ≤ +60°C) (Mining)		
Australia Approval Group 1	IECEX ITA 10.0003X Ex ia I Ma (-40°C ≤ Ta ≤ +60°C)		
South African Approval	Certificate No. MASC MS/16-0229X Group I and II (As Baseefa/ATEX)		

How To Order



T: 150 210 98804

www.hansfordsensors.com.cn

汉施弗德传感器（上海）有限公司



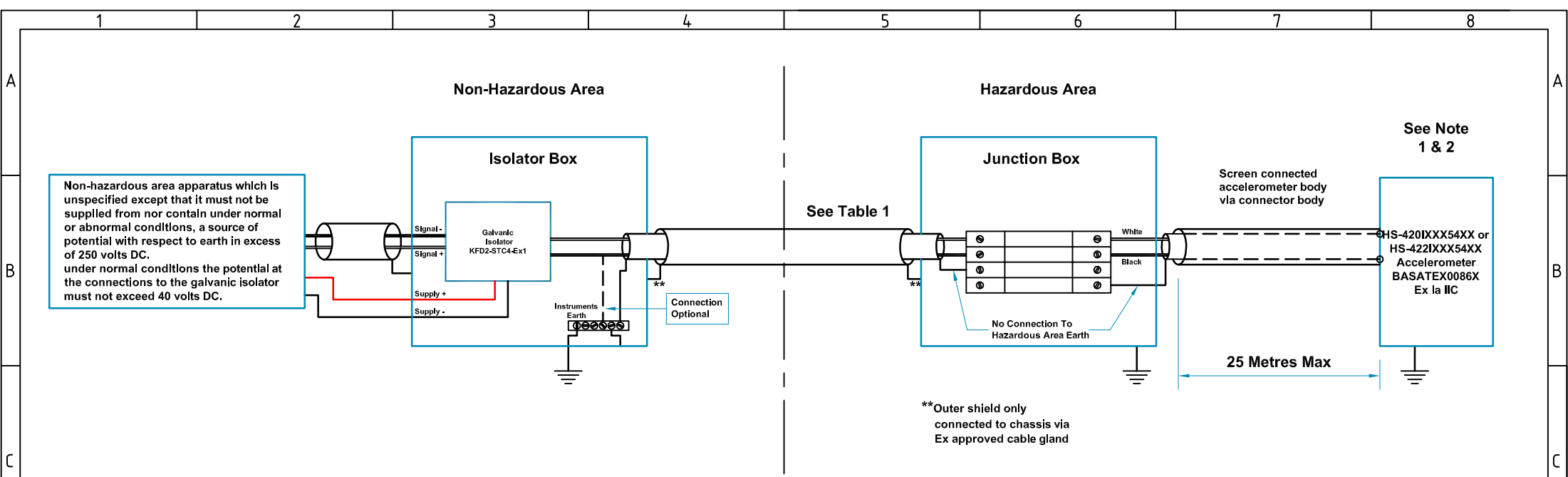



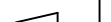
Table 1: Cable Connecting The Connector Version		
Group	Capacitance μF	L/R Ratio $\mu\text{H}/\Omega$
IIC	0.096	72
IIB	0.767	277
IIA	2.597	585

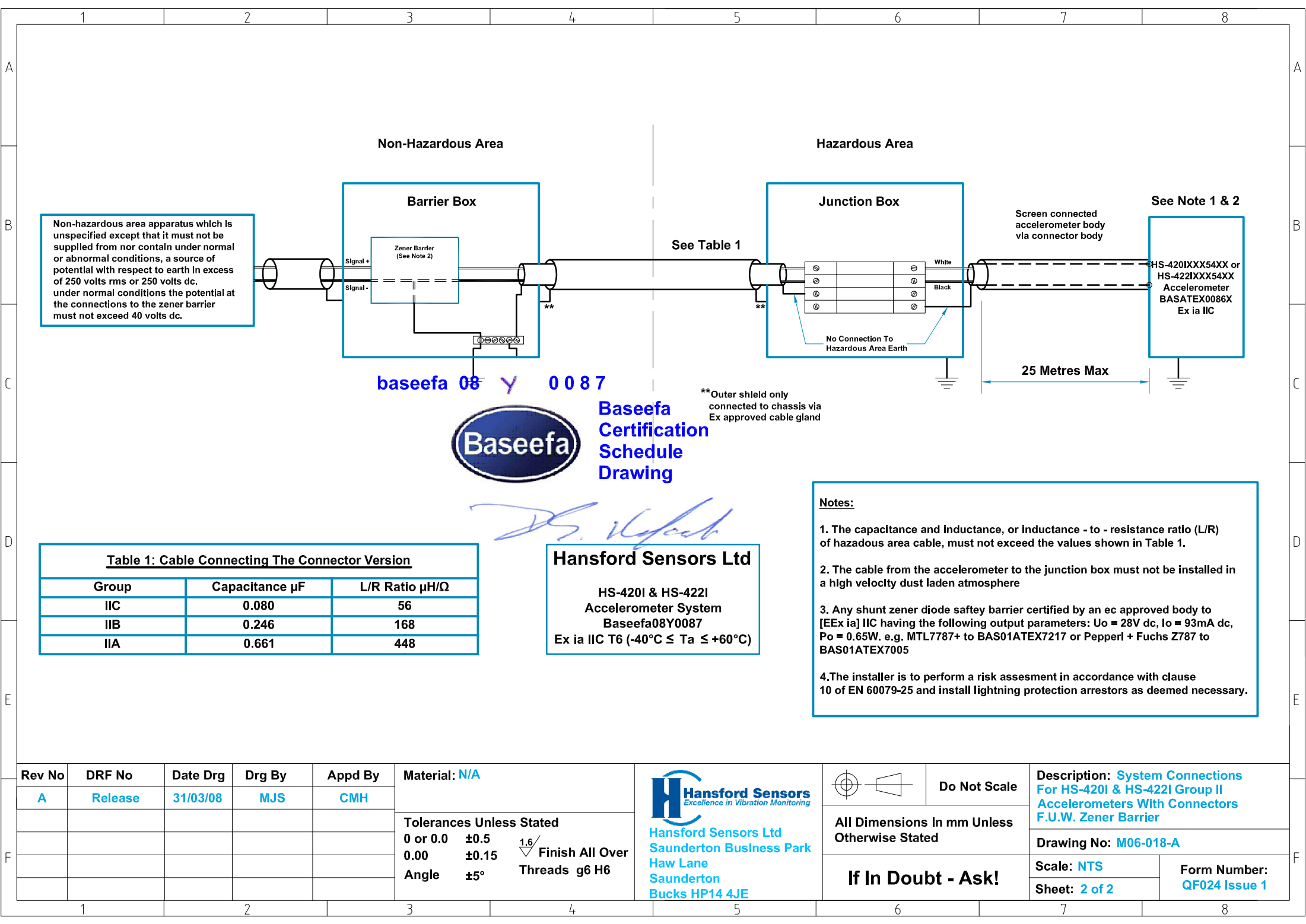
Hansford Sensors Ltd

HS-420I & HS-422I
Accelerometer System

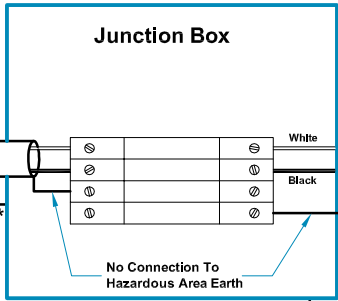
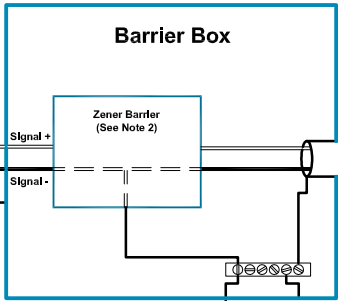
Ex ia IIC T6 (-40°C ≤ Ta ≤ +60°C)

- Notes:**
1. The capacitance and inductance, or inductance - to - resistance ratio (L/R) of hazardous area cable, must not exceed the values shown in Table 1.
 2. The cable from the accelerometer to the junction box must not be installed in a high velocity dust laden atmosphere.
 3. The Installer is to perform a risk assessment in accordance with clause 10 of EN 60079-25 and install lightning protection arrestors as deemed necessary.

F	Rev No	DRF No	Date Drg	Drg By	Appd By	Material: N/A	 <div>Hansford Sensors <i>Excellence in Vibration Monitoring</i></div> <div>Hansford Sensors Ltd Saunderton Business Park Haw Lane Saunderton Bucks HP14 4JE</div>	 <div>Do Not Scale</div>	Description: System Connections For HS-420I & HS-422I Group II Accelerometers With Connectors F.U.W. Galvanic Isolation	
	A	Release	31/03/08	MJS	CMH	Tolerances Unless Stated 0 or 0.0 ±0.5 0.00 ±0.15 Angle ±5° 1.6/ Finish All Over Threads g6 H6				
								All Dimensions In mm Unless Otherwise Stated	Drawing No: M06-034-A	
						If In Doubt - Ask!		Scale: NTS	Form Number: QF024 Issue 1	
					Sheet: 1 of 1					
	1		2		3	4	5	6	7	8



Non-hazardous area apparatus which is unspecified except that it must not be supplied from nor contain under normal or abnormal conditions, a source of potential with respect to earth in excess of 250 volts rms or 250 volts dc. under normal conditions the potential at the connections to the zener barrier must not exceed 40 volts dc.



See Note 1 & 2

HS-420I or HS-422I Accelerometer BASATEX0086X Ex ia IIC

Screen connected accelerometer body via connector body

25 Metres Max

See Table 1

**Outer shield only connected to chassis via Ex approved cable gland

baseefa 08 Y 0087



Baseefa Certification Schedule Drawing

Handwritten signature

Table 1: Cable Connecting The Connector Version

Group	Capacitance μF	L/R Ratio $\mu\text{H}/\Omega$
IIC	0.080	56
IIB	0.246	168
IIA	0.661	448

Hansford Sensors Ltd

HS-420I & HS-422I Accelerometer System
Baseefa08Y0087
Ex ia IIC T6 (-40°C ≤ T_a ≤ +60°C)

Notes:

- The capacitance and inductance, or inductance - to - resistance ratio (L/R) of hazardous area cable, must not exceed the values shown in Table 1.
- The cable from the accelerometer to the junction box must not be installed in a high velocity dust laden atmosphere
- Any shunt zener diode safety barrier certified by an ec approved body to [EEx ia] IIC having the following output parameters: U_o = 28V dc, I_o = 93mA dc, P_o = 0.65W. e.g. MTL7787+ to BAS01ATEX7217 or Pepperl + Fuchs Z787 to BAS01ATEX7005
- The installer is to perform a risk assesment in accordance with clause 10 of EN 60079-25 and install lightning protection arrestors as deemed necessary.

Rev No	DRF No	Date Drg	Drg By	Appd By	Material: N/A	<div><div>Hansford Sensors <i>Excellence in Vibration Monitoring</i></div><div>Hansford Sensors Ltd Saunderton Business Park Haw Lane Saunderton Bucks HP14 4JE</div></div>	 Do Not Scale	Description: System Connections For HS-420I & HS-422I Group II Accelerometers With Connectors F.U.W. Zener Barrier		
A	Release	31/03/08	MJS	CMH	<div><div><div>Tolerances Unless Stated</div><div>0 or 0.0 ±0.5</div><div>0.00 ±0.15</div><div>Angle ±5°</div></div><div><div><div>1.6</div><div>▽</div></div>Finish All Over Threads g6 H6</div></div>		All Dimensions In mm Unless Otherwise Stated	Drawing No: M06-018-A		
								Scale: NTS	Form Number: QF024 Issue 1	
								Sheet: 2 of 2		
								<div>If In Doubt - Ask!</div>		